



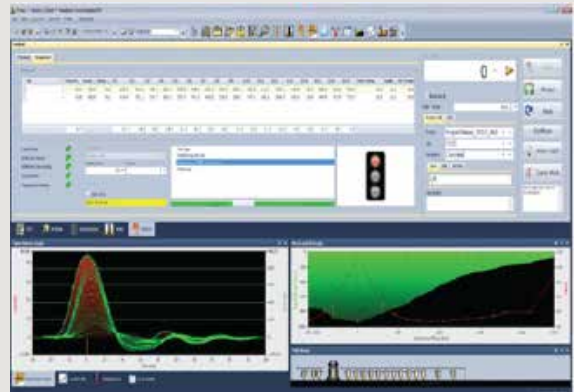
SWECO ALWAYS COMPLIES WITH:

1. ICAO Annex 14 Volume 1 - Aerodrome - Design and Operation
2. FAA AC 150/5370-11B
3. AASHTO R32-11
4. Civil Aviation Safety Regulation: CASR Part 139 – Aerodromes

SAFE OPERATION OPTIMIZE INVESTMENTS

Monitoring of your pavement conditions is a must to secure a smooth and safe operation of airport and road pavements. Today most airports around the world experience a steadily increasing in- and outgoing air traffic as well as new aircraft types subjecting the pavements to much higher loads. The PRIMAX Heavy Weight Deflectometers are all about ensuring a safe infrastructure to move people and goods around in an environmentally safe and sustainable way.

PRIMAX 2500 or 3500



DO YOUR PAVEMENTS MATCH THE LOADS?

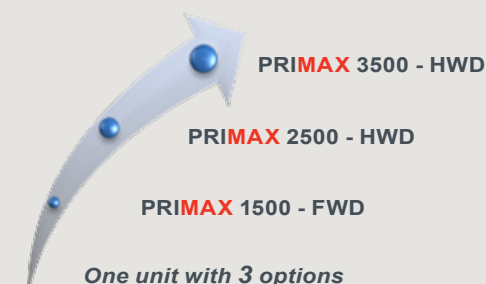
STRUCTURAL BEHAVIOUR OF PAVEMENTS

Every day your pavements are subjected to the sometimes heavy load of traffic. When the pavements were constructed, design was calculated with regard to the load the pavements should be capable of carrying. However, do the actual values match the design? If not, the pavement may fail prematurely and over time, you may see accelerated deterioration with expensive consequences.

Knowing your pavements' structural conditions is vital to prevent your pavements from failing. It is important to keep monitoring the pavement layer conditions with Heavy Weight Deflectometer to report correct values for the pavements and to ensure optimisation of funds to be spent on pavement maintenance.

Analysing and calculating data collected with the PRIMAX HWD with PRIMAX Design Software allows you to assess pavement layer condition development to optimize your planning of pavement maintenance:

- PCN - values
- Dynamic E moduli
- Remaining service life
- Determination of critical layer
- Reinforcement (overlay) requirements



Sweco plans and designs the communities and cities of the future. Our work results in sustainable buildings, efficient infrastructure and access to electricity and clean water. With 14,500 employees in 15 countries, we offer our customers the right expertise for every situation. We carry out projects in 70 countries annually throughout the world. Sweco is Europe's leading architecture and engineering consultancy, with sales of approximately SEK 15.2 billion (EUR 1.7 billion) (pro forma 2014). The company is listed on NASDAQ OMX Stockholm AB.

PRIMAX - RELIABLE, EFFICIENT AND COLLABORATIVE RELIABILITY AND QUALITY ASSURANCE

- Knowhow of producing Falling Weight Deflectometers since 1965
- Accurate data output with high repeatability and reproducibility
- Supplied, tested and applicable under worldwide climate and weather conditions
- CE marked quality tested durable components
- Quality certified company - ISO 9001, 14001, OHSAS and AASHTO R-32
- 24 month product warranty on PRIMAX

Efficient product solutions for optimum safety and performance

- Automated equipment safety monitoring and warning system
- Cost and time reducing product solutions for surveys
- Scalable load options - upgradable on demand
- Project navigator for project management Collaborative software solutions
- On-line support integrated for remote system monitoring & support
- Fully linked and aligned with RoSy for easy import/export of data
- Real time data calculation of E moduli during field surveys
- Quality supervision with PRIMAX observer surveys
- Quality supervision with PRIMAX observer

Manufacturer of PRIMAX FWD/HWD
Sweco Danmark A/S
Pavement Consultants
 Kokbjerg 5
 6000 Kolding
 T +45 72 207 207
www.pavement-consultants.com

Sweco Danmark A/S
 Ørestads Boulevard 41
 DK-2300 Copenhagen S
 T +45 72 207 207
www.sweco.dk